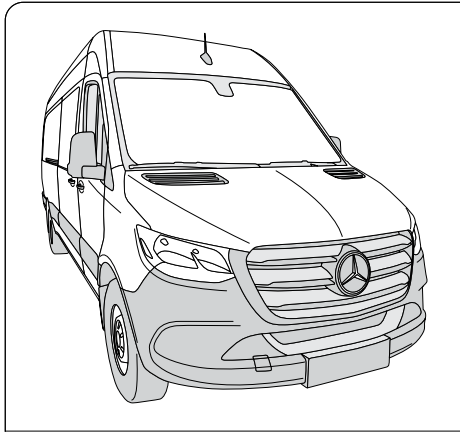
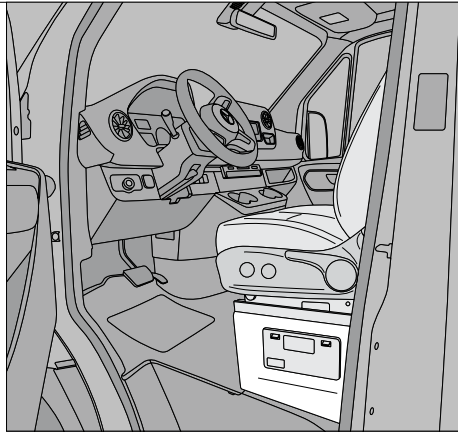


2020 Mercedes Sprinter 2500

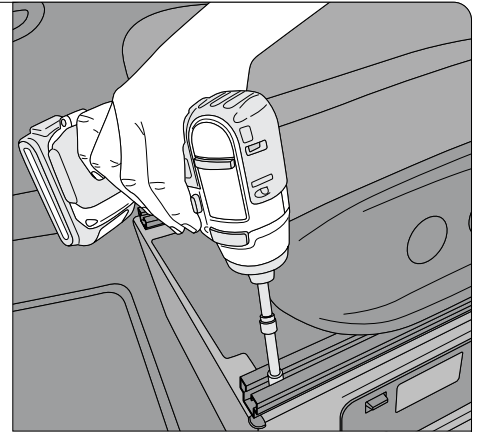
GO9 Installation with HRN-CM24Y1 & HRN-CP04A2



2020 Mercedes Sprinter 2500

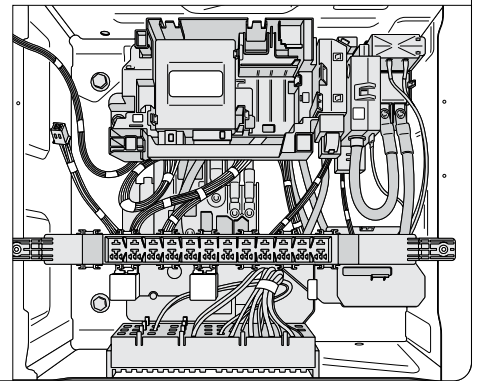
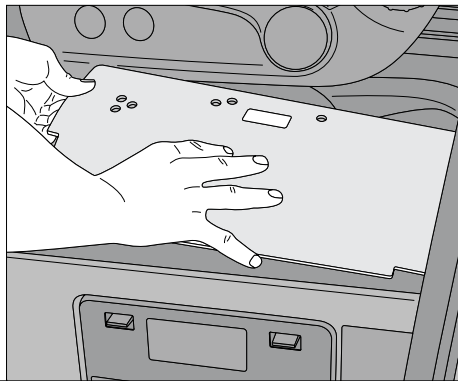
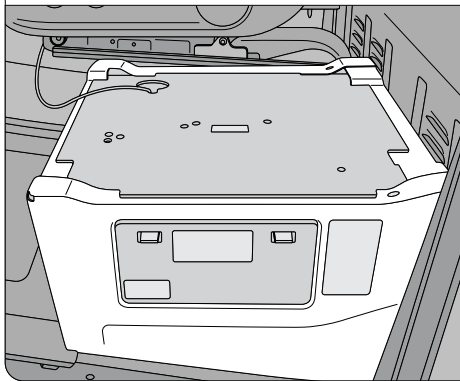


Driver's Seat

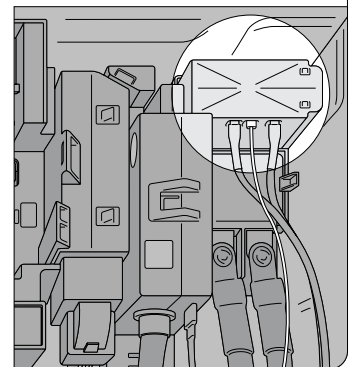
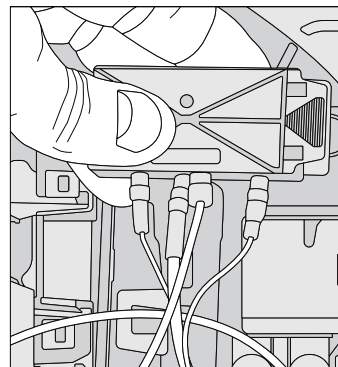
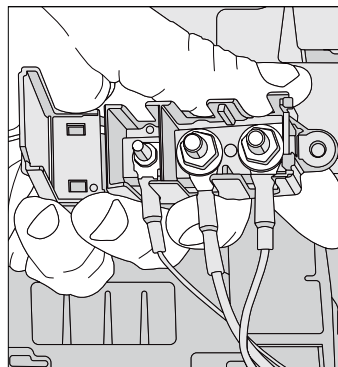
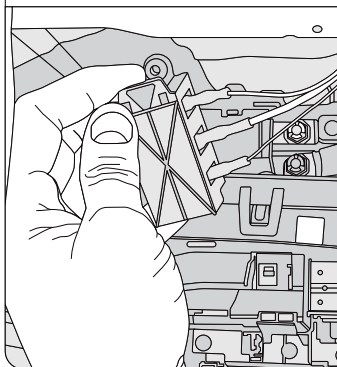


Screwdriver to unscrew the seat

Step 1 Remove the driver's seat to access installation & connection points:

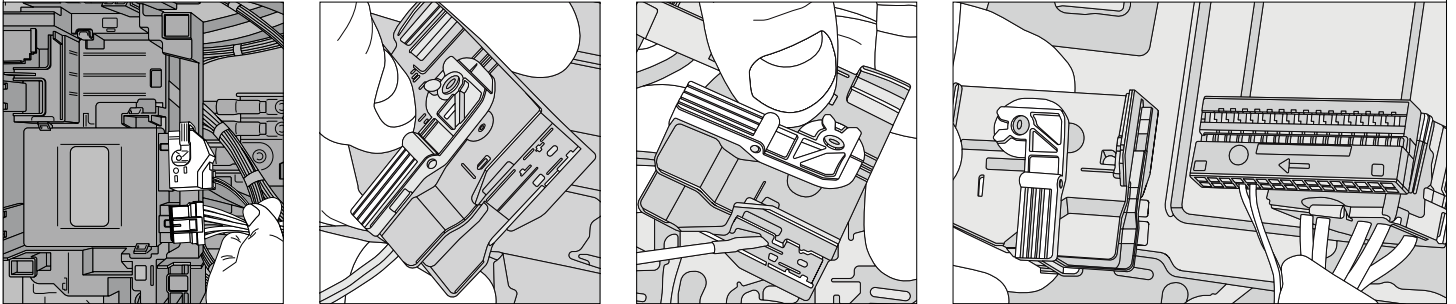


Step 2 Locate the connection points for the HRN-CP04A2, shown with power connector (center terminal):

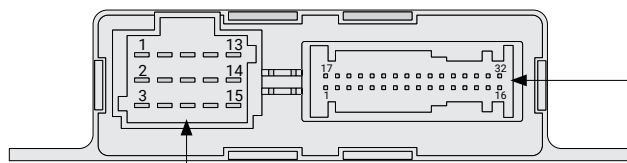


Step 3 Pictured from left to right:

1. Connection points for the Ground & CAN High-Low from HRN-CP04A2 to the FSM module connector.
2. OEM FSM module.
3. Opening the connector, which will allow you to push in the leads from the back side of the connector.
4. Push the pins into the following position:
 - Green CAN-H into pin 16
 - White CAN-L into pin 32
 - Black Ground into pin 15



Sprinter MY19: Pin Assignment



Plug 1

Pin	Circuit	Rating (A)	Type
1	Vehicle Power	-	-
2	Output 2	10	Hide Side
3	Output 5	5	Hide Side
4	Vehicle Power	-	-
5	Output 1	5	Hide Side
6	Output 18	5	Hide Side
7	Output 4	10	Hide Side
8	-	-	-
9	GND*	7.5	-
10	Vehicle Power	-	-
11	Output 3	5	Hide Side
12	Output 19	5	Hide Side
13	Vehicle Power	-	-
14	Output 20	5	Hide Side
15	Vehicle GND	-	-

* Can be utilized as a GND source

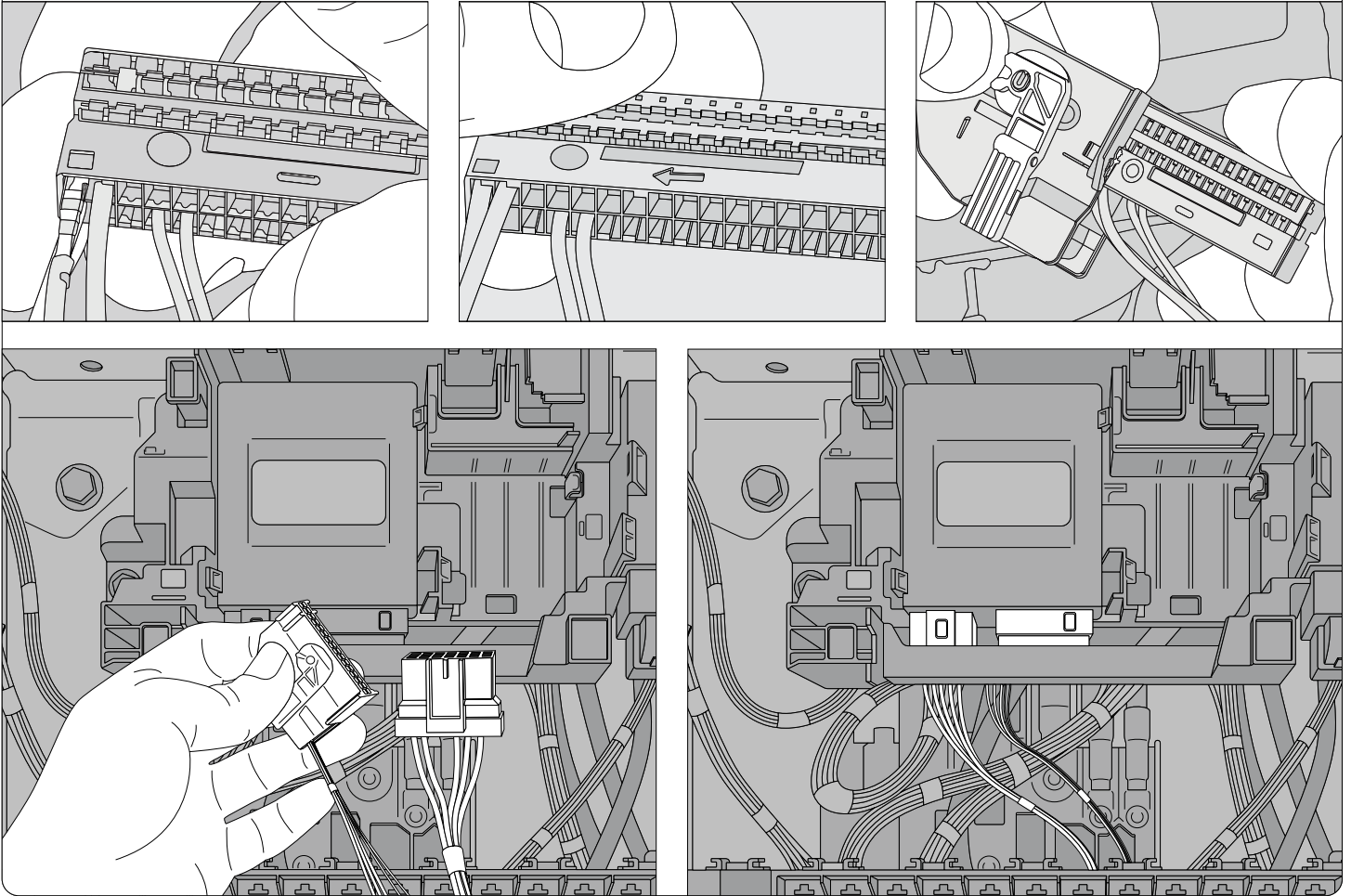
Plug 2

** Not programmable

Pin	Circuit	Rating (A)	Type
1	Output 11	0.5	Low Side
2	Output 14	0.5	Low Side
3	Output 15 (PWM fix)**	0.5	Low Side
4	Output 8	0.5	Hide Side
5	Output 9	0.5	Hide Side
6	Output 10	0.5	Hide Side
7	Input 5	-	Low Side
8	Input 6	-	Low Side / Analog
9	Input 1	-	Low Side / Analog
10	Input 10	-	Low Side / Analog
11	Input 7	-	Low Side / Analog
12	-	-	-
13	GND*	1	-
14	CAN GND*	-	-
15	GND*	1	-
16	ABH CAN-H	-	-
17	Output 13	1	Low Side
18	Output 17	1	Low Side
19	Output 12	0.5	Low Side
20	Output 7	1	Hide Side
21	Output 6	1	Hide Side
22	Output 16	0.5	Hide Side
23	Input 4	-	Hide Side
24	Input 8	-	Low Side / Analog
25	Input 9	-	Low Side / Analog
26	Input 2	-	Hide Side
27	Input 3	-	Hide Side
28	Body CAN-L	-	-
29	Body CAN-H	-	-
30	CiA CAN-L	-	-
31	CiA CAN-H	-	-
32	ABH CAN-L	-	-

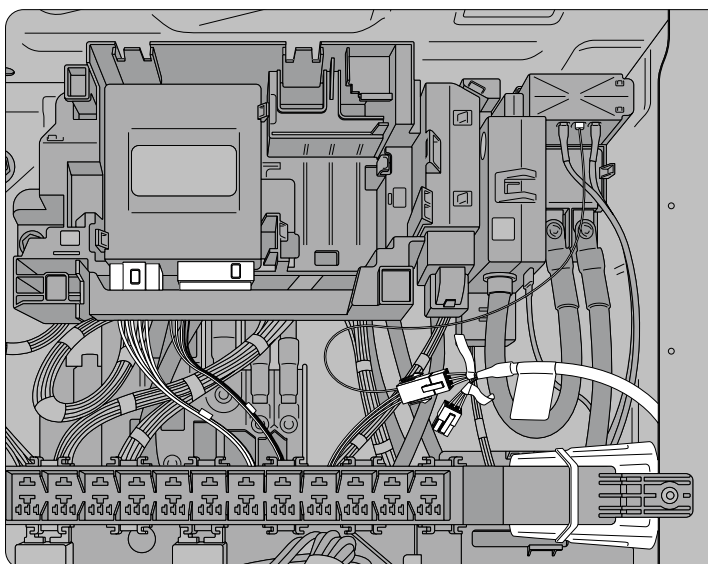
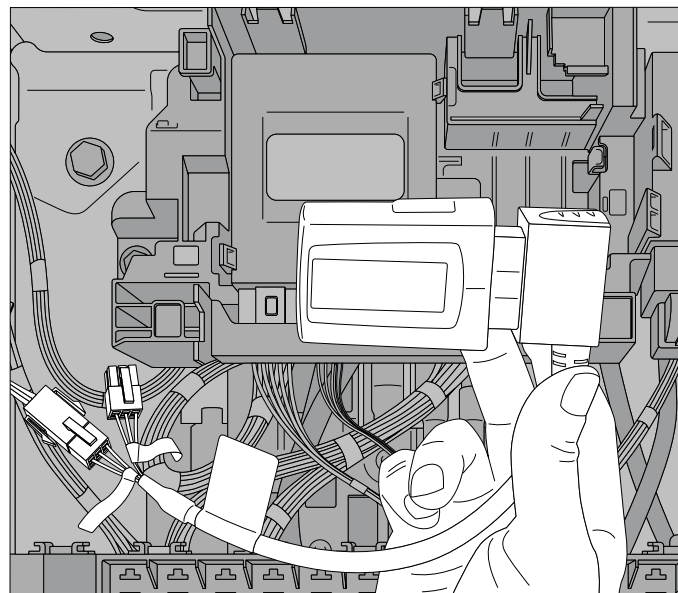
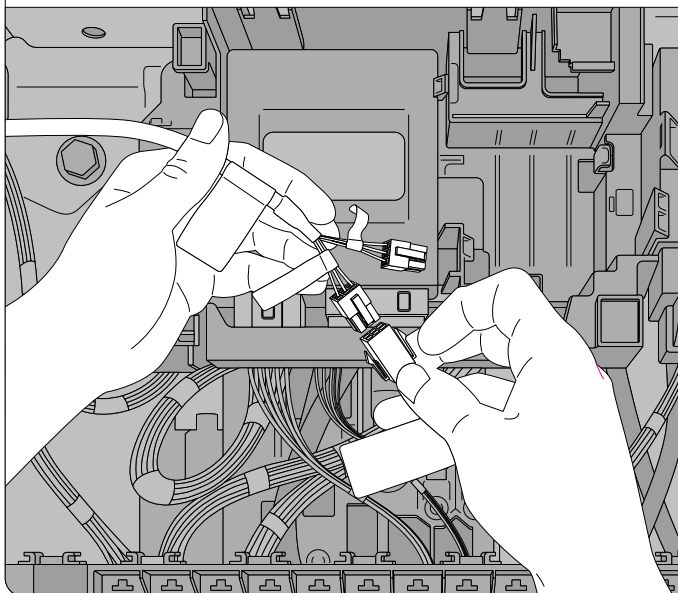
R&D Liaison | MBV, LLC | 7/14/2020

Additional pictures of the green, white, and black cables connected to the proper pins are shown below. Place the wires together with the OEM wires and then reconnect to the FSM module.



Step 4 Once all HRN-CP04A2 connections have been made, continue with the remainder of the harness assembly.

Step 5 Make all connections between the HRN-CP04A2 to the OBD-II portion of the HRN-CM24Y1. Once the harness wiring is complete, you're ready to connect the GO9 device.



Step 6 Connect the GO device to the harness. Find a suitable mounting location, **ensuring the GPS antenna is facing upward.**

Step 7 Once the GO9 installation is complete, start the vehicle and wait for the GO device to initialize. This process can take up to five minutes and the device will beep throughout. Ensure that all three LEDs are active. If any of the LEDs are not active, please contact support for troubleshooting:

- The red LED indicates ignition
- The blue LED indicates GPS signal
- The green LED indicates a cellular network connection

If any of the LEDs are not active, please contact support for troubleshooting.